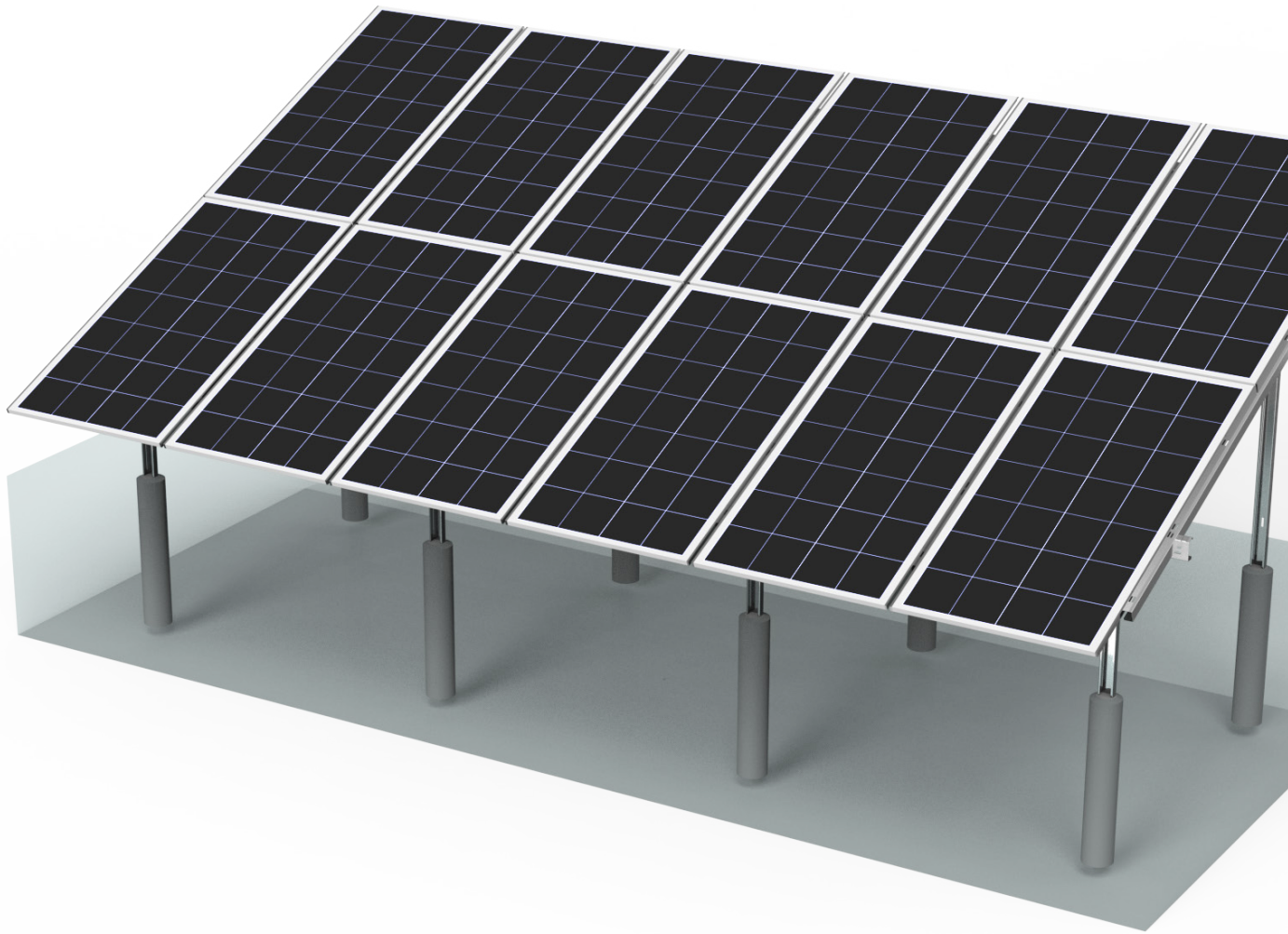




M-RACK

SUMMIT SERIES

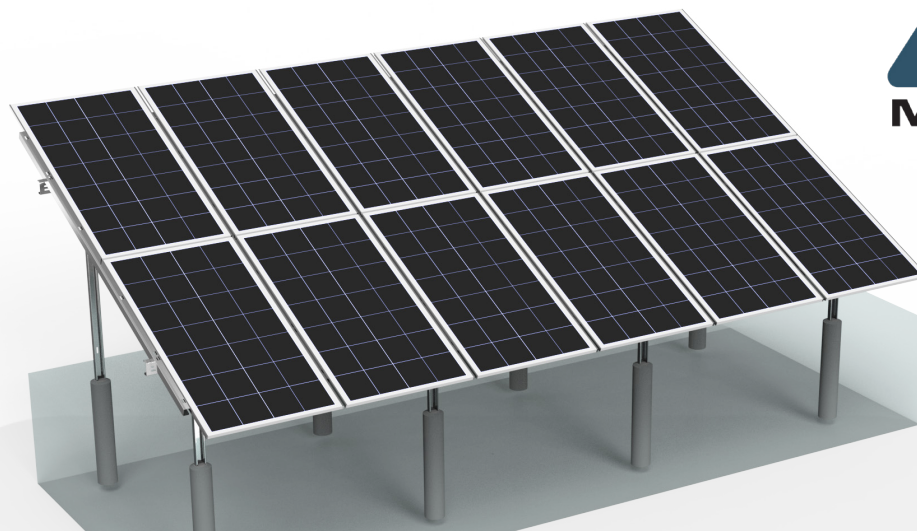


PRODUCT OVERVIEW

PORTRAIT & LANDSCAPE MOUNTING SYSTEM

Introducing M-Rack's utility-scale ground mount system. Designed by industry experts to meet the complexities of any project.

Our systems work with a multitude of different foundation types to provide you the most flexible and adaptable system on the market.



SUMMIT SERIES

DATA SHEET

PRODUCT NAME:
M-Rack SUMMIT

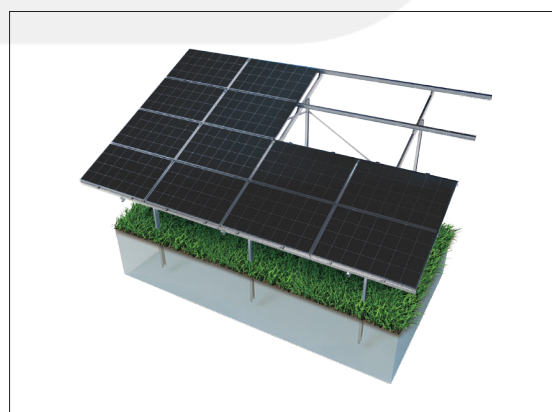
SERIAL CODE:
MRSM-1

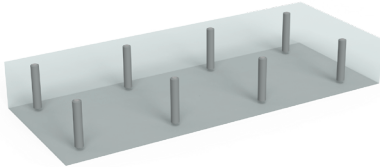
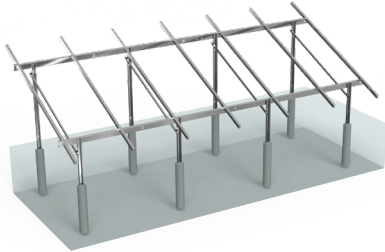
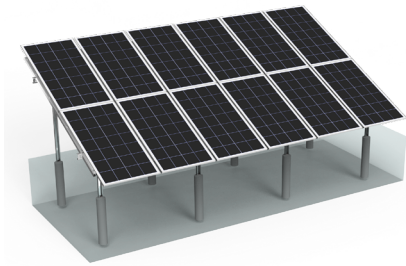
PRODUCT CATEGORY:
Ground Mount

PRODUCT FEATURES

MAIN CHARACTERISTICS

- 01 FLEXIBLE SYSTEM DESIGN:** The M-Rack ground mount solution is engineered to adapt to site-specific conditions, ensuring a fully tailored configuration for every project.
- 02 ROBUST EUROPEAN SUPPLY CHAIN:** Boasting proud and robust European production, our systems have improved sustainability, reduced lead times, and are able to meet high volume projects with speed.
- 03 VERSATILE FOUNDATION OPTIONS:** Compatible with a wide range of foundation type - including driven piles, concrete pads, ballast structures, ground screws, and root-based systems to meet diverse geotechnical and environmental requirements.
- 04 SAFETY-LED ENGINEERING & PROVEN RELIABILITY:** Engineered with safety-first principles and backed by industry-leading warranty coverage, M-Rack products deliver dependable quality and long-term performance assurance.



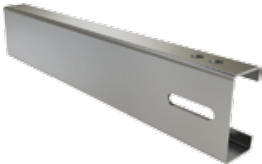


TECHNICAL SPECIFICATIONS

STEEL TYPES	Zn/Mg Alloy coated steel (S235-S335) EN10025/EN10029
FOUNDATION OPTIONS	Driven pile, concrete pad, ballast, screw, and root systems
PANEL CONFIGURATION	2 panels in portrait, or 4 in landscape
SYSTEM ANGLES	0-60 degree tilt angle
MIN/MAX PANEL DIMENSIONS	Framed, with 30-50mm width
MIN PANEL HEIGHT FROM GROUND	60cm
COATING TYPES	Zn/Mg Alloy coated (DIN EN10346) Hot-dip galvanised (EN ISO 1461)
WIND LOADS	0 to +30 m/s (or as required to meet site specifics)
SNOW LOADS	0 to +5kN/m ² (or as required to meet site specifics)

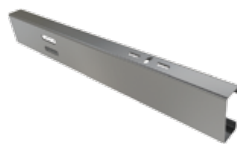
COMPONENTS

STEEL COLUMN



- MR-SC90/MR-SC100/MR-SC120
M12X30 KNURLED BOLT
M12 FLANGED NUT
M12 WASHER

STEEL BEAM



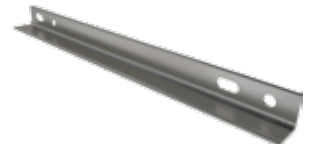
- MR-SB100/MR-SB120
M12X30 KNURLED BOLT
M12 FLANGED NUT
M8X30 KNURLED BOLT
M8 FLANGED NUT
M8/M12 WASHER

STEEL PURLIN



- MR-SP90/MR-SP110
M12X30 KNURLED BOLT
M12 FLANGED NUT
M8X30 KNURLED BOLT
M8 FLANGED NUT
M8/M12 WASHER

STEEL L-BRACKET



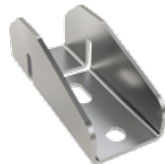
- MR-CL-40X40/MR-CL-50X50
M12X30 KNURLED BOLT
M12 FLANGED NUT
M12 WASHER

PURLIN CONNECTOR JOINT



- MR-PCJ-90/MR-PCJ-100/MR-PCJ-110
M12X30 KNURLED BOLT
M12 FLANGED NUT
M12 WASHER

PURLIN CONNECTOR



- MR-PC-40
M8X30 KNURLED BOLT
M8 FLANGED NUT
M8 WASHER

END CLAMP



- MR-EC-30/MR-EC-32/MR-EC-40
M8X30 HEX BOLT
M8 FLANGED NUT

MID CLAMP



- MR-MC-70
M8X30 HEX BOLT
M8 FLANGED NUT

FURTHER TECHNICAL INFORMATION & CUSTOMER SUPPORT

E-mail: info@m-rack.co.uk
Website: www.m-rack.co.uk

